



GEA Farm Technologies

## EuroClass 800/850 and 800 RE

Highly efficient milking parlours



GEA Milking & Cooling | [WestfaliaSurge](#)

GEA Farm Technologies – The right choice.

# EuroClass 800/850 and 800 RE – milking at its best!

## Great space-saving design

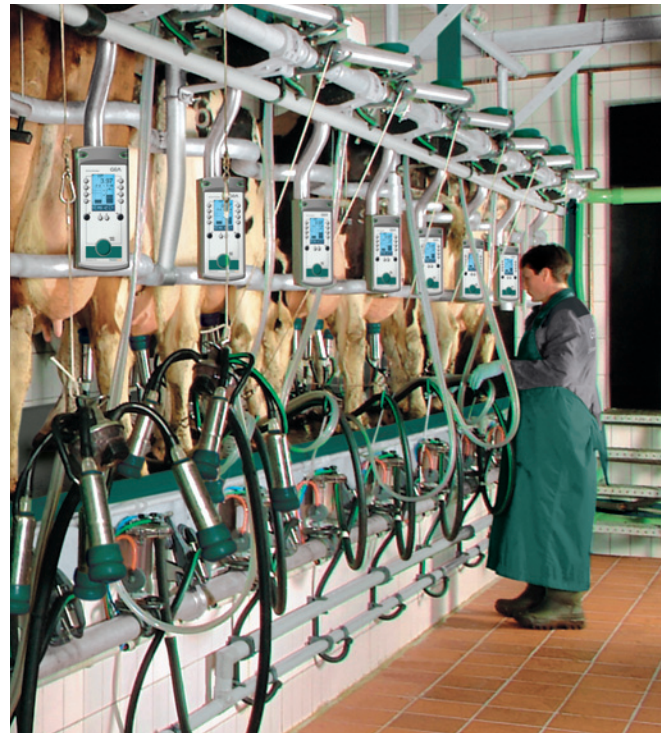
With its time and space saving design, the EuroClass 800/850 herringbone milking parlour is simply unbeatable when it comes to efficiency. The short distances between cow positions (800/850 mm modular dimension) allow sufficient space for the animals to be monitored individually and for the cluster to be applied comfortably through the back legs.

**Result:** More milking places in the same amount of space as a conventional parlour – giving lower construction costs!

## Simply unbeatable efficiency

High efficiency level's in a successful parlour are achieved where everything runs smoothly and without any stress. The animals enter and leave the milking parlour calmly and quickly through wide passageways. The free-standing, animal-friendly frame design ensures excellent cow position and optimum operator working space, with shorter walking distances and a clear view of the udder.

**Result:** faster access and shorter milking times.



*EuroClass 800/850*



## With a clear overall view

Regardless of what equipment is installed at the milking place for the operator, milking in the EuroClass 800/850 means:

Less stress, higher productivity and enough time and space to ensure careful milking and monitoring of the animals.

As  
efficient as it  
is necessary!



# EuroClass 800 RE



## The throughput accelerator

Two words for a great step forward: "Rapid Exit" is the name of the EuroClass range that has been designed for medium-sized herds. The crucial difference from the conventional herringbone milking parlour is the new front exit.

**The effect:** "turbo-speed" exit, much higher throughput, more time saved and greater efficiency.

## The figures prove it

With the rapid exit, the time spent moving the animals is approx. 50% shorter compared to a conventional EuroClass 800/850 of the same size. With shorter waiting times for the animals, this means that the throughput is increased by up to 15%. So the rapid exit of your animals is your way into a higher level of productivity.



## Positioning bonus

The breast rail is curved to match the shape of the animals, enabling fast, perfect positioning of the animals. **The effect:** time saved thanks to faster application of the clusters, less stress for the operator and animals.

**Result:** improved letdown because there is less stress on the animals. Another bonus is the flexible height adjustment of the breast rail which can be adjusted to suit the different breed sizes.



### The gateway to success

Gate controls at milking place with Metatron P/S 21 speed up the group change-over and make work easier for the operator. The integrated DPNet gate controls are clearly designed and easy to use and can be operated from any milking place. This cuts down the distances that operators have to cover and noticeably saves time on the group changeover.



### Benefits at a glance

- Short distances for the operator and animals to cover
- Higher throughput and better economy thanks to the front exit
- Ergonomic workplace, easy cleaning and a better view thanks to the free-standing milking parlour frame
- Rapid positioning and faster cluster application time thanks to the front breast rail with an indexing function
- Safety and functionality thanks to tried and tested structural components
- Long service life thanks to high quality materials
- Indexing breast rails brings the udder nearer to the operator saving on time and effort
- Lower construction costs (even with the 850 mm modular dimension)
- Animals always ready for milking because they are more relaxed

Combined with the DairyManagementSystem 21, you will achieve the optimum efficiency for your farm.

Ask about DPVoice 21 – the voice recognition device in



the milking parlour.



# Efficiency down to the last detail



*Animal-friendly entry and exit gates actively support the positioning of the first and last cow*

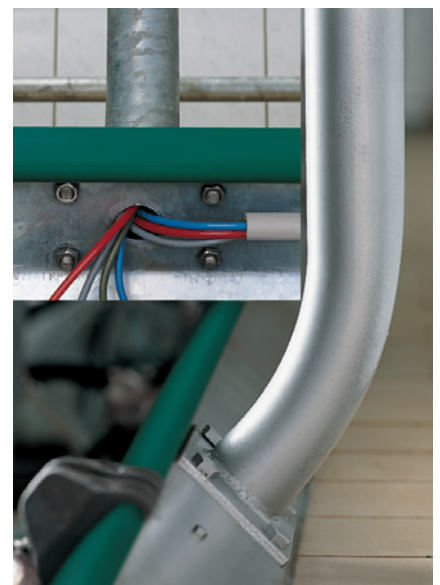


*Wide passageway for rapid entry*

## High performance in the passageway

With the wide entries and exits in the EuroClass 800/850 and 800 RE, your animals can practically open the gate for themselves: vacuum or pneumatic controlled. Easy, convenient and robust for everyday use!

The free-standing milking parlour frame is a clever, space-oriented, time-saving design. The watchword is: fewer uprights, a better view, more milking places, short distances and easy cleaning!



*Pit Edge Kerbing  
Accident prevention and safety –  
no stepping over the edge*

# GEA Farm Technologies

## The right choice.



GEA Farm Technologies GmbH

Siemensstraße 25 - 27, D-59199 Bönen  
Tel. +49 (0) 23 83 93 7-0, Fax +49 (0) 23 83 93 8-0  
[www.gea-farmtechnologies.com](http://www.gea-farmtechnologies.com)